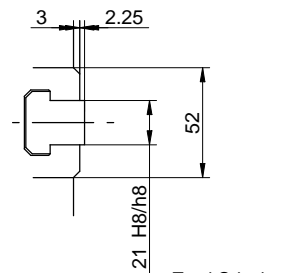
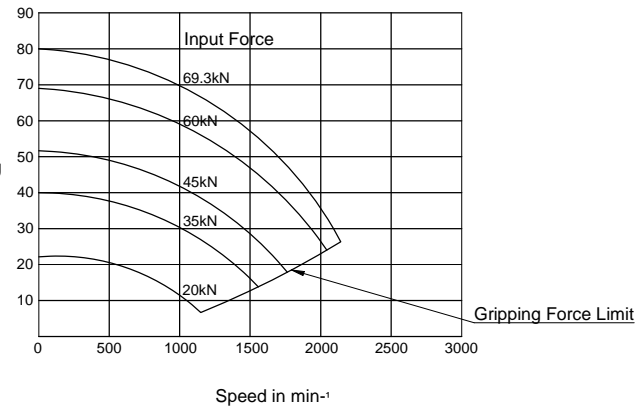


Specifications

SPINDLE NOSE SIZE	A2-6
THROUGH HOLE	63mm
MAX. GRIPPING RANGE	304mm
MIN. GRIPPING RANGE	43mm
JAW STROKE	35mm
PLUNGER STROKE	25mm
MAX. DRAW BAR PULL FORCE	69.3kN
MAX. GRIPPING FORCE	80.4kN
MAX. SPEED	2200min ⁻¹
TOTAL GRIPPING FORCE AT MAX. SPEED	26.8kN
NET WEIGHT WITH SOFT TOP JAWS	78kg
MOMENT OF INERTIA	0.918kg.m ²
MATCHING CYLINDER	S2091
MAX. PRESSURE	3.22MPa
MATCHING HARD TOP JAW	HB12N1
MATCHING SOFT TOP JAW	SB12N1



Gripping Characteristic Graph For BL-212A6



KITAGAWA EUROPE LIMITED
 TITLE : BL212A6 POWER CHUCK
 www.kitagawaeurope.com