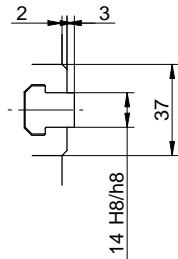


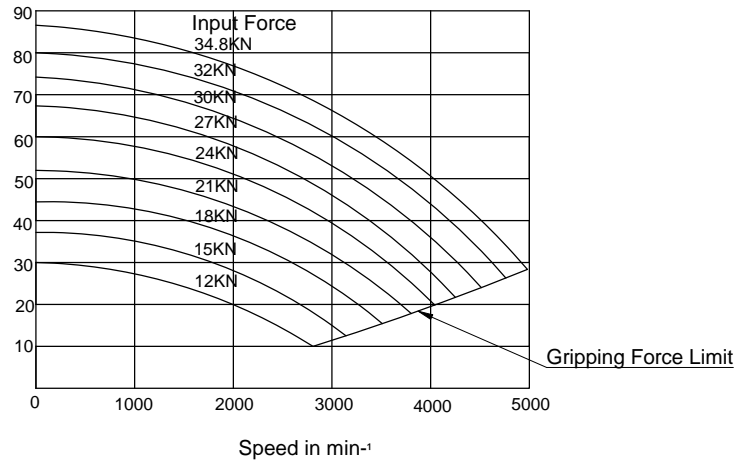
Specifications

SPINDLE NOSE SIZE	A2-6
THROUGH HOLE	52mm
MAX. GRIPPING RANGE	210mm
MIN. GRIPPING RANGE	13mm
JAW STROKE	7.4mm
PLUNGER STROKE	16mm
MAX. DRAW BAR PULL FORCE	34.8kN
MAX. GRIPPING FORCE	86kN
MAX. SPEED	5000min ⁻¹
TOTAL GRIPPING FORCE AT MAX. SPEED	28.7kN
NET WEIGHT WITH SOFT TOP JAWS	23.6kg
MOMENT OF INERTIA	0.178kg.m ²
MATCHING CYLINDER	S1552
MAX. PRESSURE	2.65MPa
MATCHING HARD TOP JAW	HB08A1
MATCHING SOFT TOP JAW	SB08B1/KSJ-208



Total Gripping Force in KN

Gripping Characteristic Graph For B-208A6



KITAGAWA EUROPE LIMITED
 TITLE : B208A6 POWER CHUCK
 www.kitagawaeurope.com