



CHUCK

Closed Centre Power Chuck (Long Stroke)

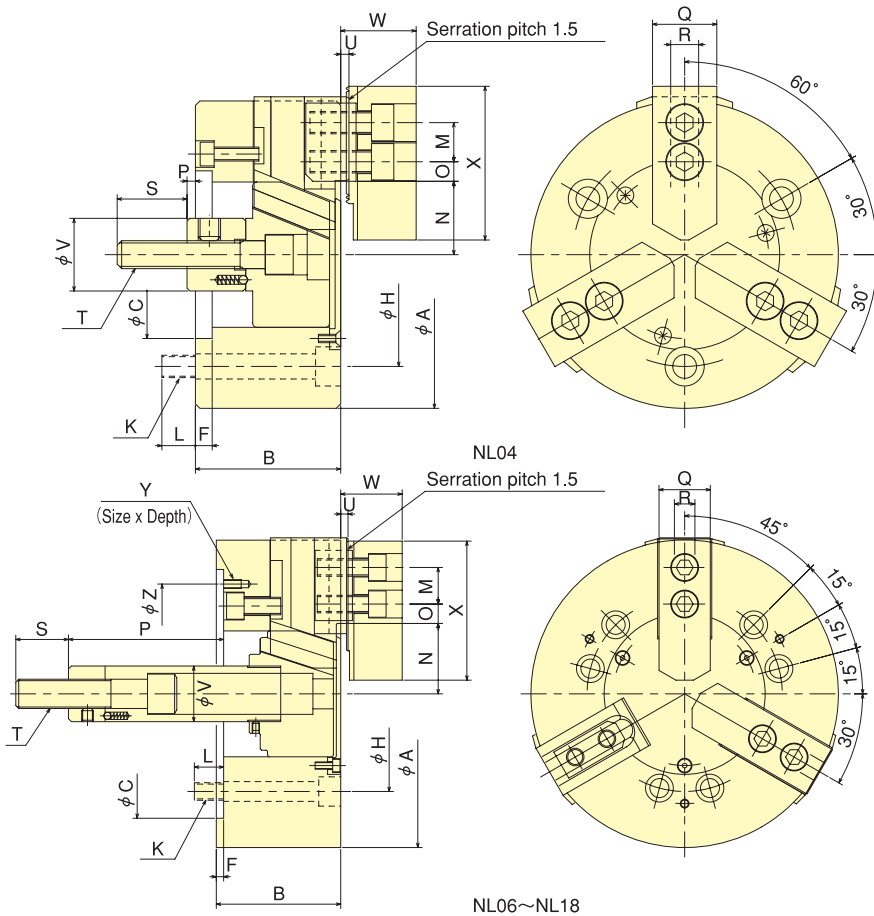
NL series

Extra Long Jaw Stroke

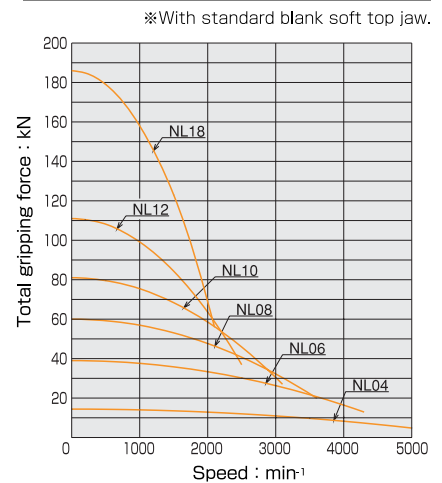
Flange work securely gripped



Dimensional Drawings



Gripping Characteristic Graphs



Dimensions

Dimensions Model	A	B	C (H6)	F	H	K	L	M	N max.	N min.	O max.	O min.	P max.	P min.	Q	R	S	T	U	V	W	X	Y	Z
NL04	110	52	60	6	80	3-M 8	12	14	26.5	20.45	9.75	6.75	18	3	23	10	25	M10×1.5	3	26	27	55	-	-
NL06	165	74	140	5	104.8	6-M10	14	20	40.5	34	13.75	9.25	101.5	81.5	31	12	36	M16×2.0	4	34	35	72	M6×10	116
NL08	210	85	170	5	133.4	6-M12	20	25	48.1	40	20.75	11.75	131	106	35	14	36	M20×2.5	5	38	42	95	M6×12	150
NL10	254	89	220	5	171.4	6-M16	18	30	54.4	45.35	29.5	11.5	161	133	40	16	36	M20×2.5	5	45	46	110	M8×15	190
NL12	304	106	220	6	171.4	6-M16	18	30	65.7	56	42.75	12.75	47	17	50	18	46	M24×3.0	5	50	54	129	M8×15	190
NL18	450	114	300	6	235	6-M20	30	43	110.5	97.5	47.25	23.25	97	57	50	25.5	55	M30	2	55	61	135	M10×20	260

Specifications

Specifications Model	Gripping range mm	Jaw Stroke (diameter) mm	Plunger Stroke mm	Max. Draw bar Pull Force kN (kgf)	Max. Gripping Force kN (kgf)	Max. Speed min⁻¹ (r.p.m)	Net Weight with soft top jaws kg	Moment of inertia kg·m²	Matching Cylinder	Max. pressure MPa (kgf/cm²)	Matching Hard top jaw	Matching Soft top jaw
NL04	110 12	12.1	15	10.0(1020)	14.4(1468)	5000	4.1	0.008	Y0715R	2.90(29.6)		SB04B1
NL06	165 22	13	20	21.0(2141)	39.0(3977)	4300	12.0	0.045	Y1020R	3.00(30.6)	HB06B1	SB06B1
NL08	210 23	16.2	25	30.0(3059)	60.0(6118)	3600	22.9	0.138	Y1225R	2.90(29.6)	HB08A1	SB08B1
NL10	254 27	18.1	28	40.0(4079)	81.0(8260)	3100	34.6	0.300	Y1530R	2.80(28.6)	HB10A1	SB10A1
NL12	304 33	19.4	30	54.0(5506)	111.0(11319)	2500	60.0	0.725	Y1530R	3.60(36.7)	HB12B1	SB12A1
NL18	450 124	26	40	91.0(9279)	186.0(18966)	2100	124.0	2.350	Y2050R	3.50(35.9)		SB15N1