

Tilting NC Rotary Table

TT150


NEW

High stiffness and clamp torque of main spindle!
Compact designed body with minimized total height
keeps less high-column of machine.



Features

- High clamp torque
- Suitable on No.30 machining centres
*High-column specification may be required.
- Built-in Rotary Joint as option

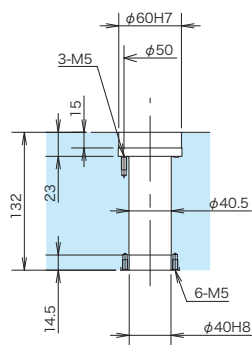
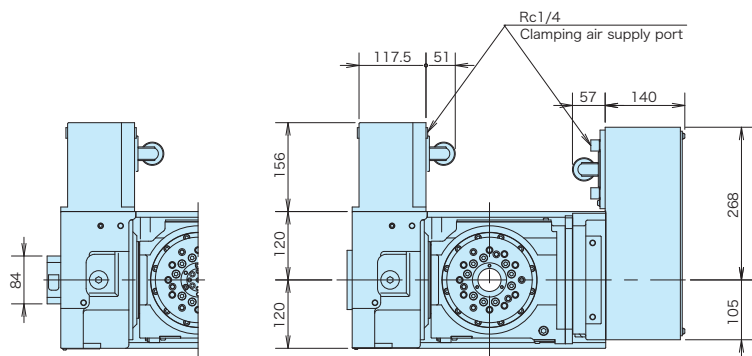
Specification

Model	Table dia (mm)	Centre Height (mm)	Register diameter on face plate (mm)	Spindle through hole diameter (mm)	Gear ratio (Rotating axis)	Gear ratio (Tilting axis)	Clamping method	Clamping torque (Rotating axis) (N · m)	Clamping torque (Tilting axis) (N · m)
TT150	φ 150	150	φ 60H7	φ 40	1/72	1/180	In pneumatic	350	550
Max. spindle speed (Rotating axis) (min ⁻¹)	Max. spindle speed (Tilting axis) (min ⁻¹)	Indexing accuracy (Rotating axis) (sec)	Indexing accuracy (Tilting axis) (sec)	Repeatability (sec)	Allowable work inertia (kg · m ²)		Allowable Load		Mass of product (kg)
41.6	16.6	30	60	4	0.14		at horizontal (kg)	at verticality (kg)	141
							50	30	

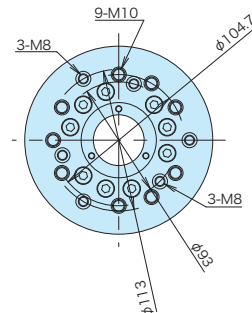
Dimensions

(with QUINTE, New Kitagawa own controller)

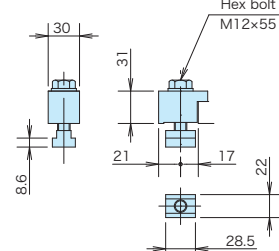
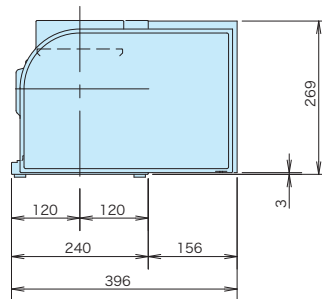
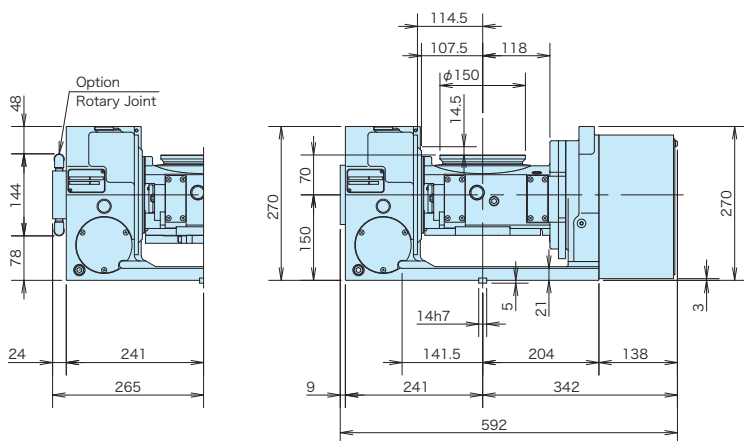
*Dimensions may be changed in accordance with the specifications of servomotor.



Thru-Hole Diameter



Detailed table hole



Clamping Device