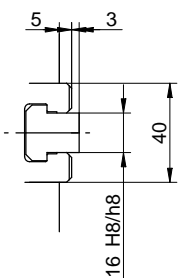
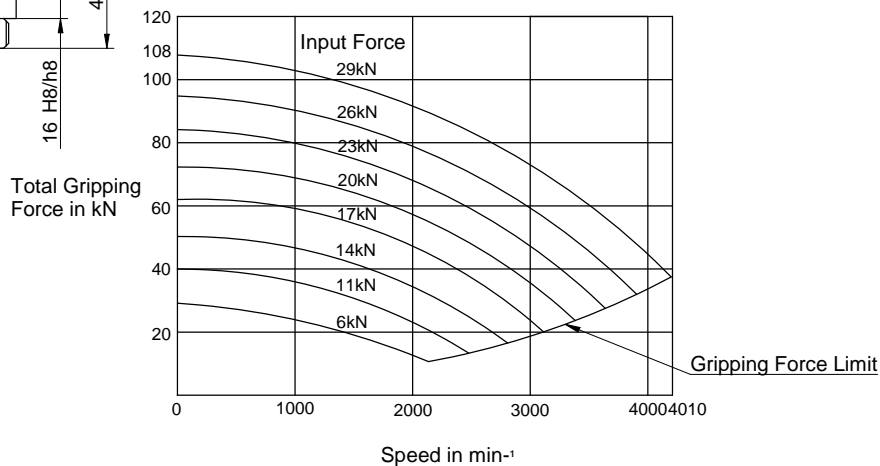


Specifications

|                                    |                        |
|------------------------------------|------------------------|
| SPINDLE NOSE SIZE                  | A2-6                   |
| MAX. GRIPPING RANGE                | 254mm                  |
| MIN. GRIPPING RANGE                | 24mm                   |
| JAW STROKE                         | 8.8mm                  |
| PLUNGER STROKE                     | 25mm                   |
| MAX. DRAW BAR PULL FORCE           | 29kN                   |
| MAX. GRIPPING FORCE                | 108kN                  |
| MAX. SPEED                         | 4010min <sup>-1</sup>  |
| TOTAL GRIPPING FORCE AT MAX. SPEED | 36kN                   |
| NET WEIGHT WITH SOFT TOP JAWS      | 40kg                   |
| MOMENT OF INERTIA                  | 0.335kg.m <sup>2</sup> |
| MATCHING CYLINDER(PRESSURE)        | Y1225R                 |
| MATCHING CYLINDER(AIR)             | AY2225R                |
| MAX. PRESSURE                      | 2.80MPa                |
| MATCHING HARD TOP JAW              | HB10A1                 |
| MATCHING SOFT TOP JAW              | SB10B1                 |



Gripping Characteristic Graph For N-10A6



KITAGAWA EUROPE LIMITED  
 TITLE : N-10A6 POWER CHUCK  
 www.kitagawaeurope.com