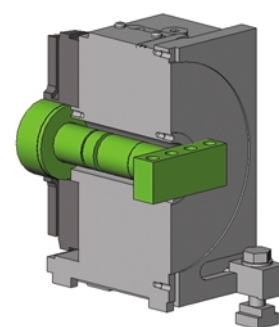


- Built in rotary joint reduces supply block projection
- External rotary joint allows many ports
- Provides air or hydraulic pressure from the rear of the table to a fixture

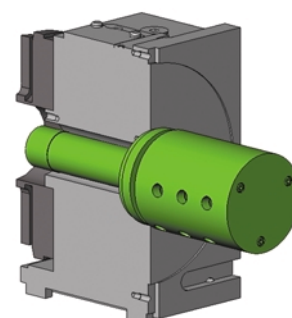


■ Applicable machine type and the specifications

Model	Size	Maximum number of ports		Rated input pressure (MPa)	
		Built-in type	External type	Hydraulic	Air-Hydraulic
				7	0.7
MR	120	3	4	7	0.7
	160	4 (+1)	6		
	200	4 (+1)	6		
	250	6	8		
	320	6	8		
TMX	160	4 (+1)	6		
	200	4 (+1)	6		
	250	6	8		
TUX	200	4 (+1)	6		
	250	6	8		
	320	6	8		
TRX	320	6	10		



Built-in rotary joint



External rotary joint

(+1) port is exclusive for pneumatic pressure.

Note) Not fitted for RSM100, TC, DM, or TBX160.

For tables of TBX 200 size or more and 400 size or more, confer with Kitagawa separately.

■ Hydraulic pump unit

(specifications)

- Service pressure: 3.4MPa (35kgf/cm²)
- Adjustable pressure range: 1.5~6.9MPa (15~70kgf/cm²)
- Power source: AC3φ 200/220V 50/60Hz

HUP 073-D **

Type

Number of blocks

Tank capacity
07: 7 ℓ
10: 10 ℓ

Serial number

Solenoid voltage
D: DC
A: AC



■ Pull-stud type

Pull studs can be used to position and fix jigs or work pieces easily.

