

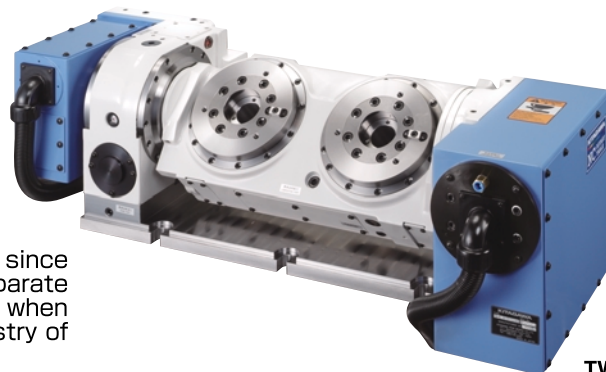


Two-axis Tilting NC Rotary Table TW2180

High performance twin spindle tilting table.

- Mountable to a compact M/C.
- Smallest width in its class 999mm.
- Built in rotary joint (option) allows simple and secure jig piping.
- High clamping torque

※In the specifications of both two additional axes, since this product is applied to (8) of item 6 of a separate list No.1 of the Foreign Trade Control Ordinance, when exporting it overseas, the permission of the Ministry of Economy, Trade and Industry is required.



TW2180

Specifications

Model		TW2180	
Tilting angle		-110° ~ +110°	
Table dia (mm)		φ 180	
Register diameter on Face Plate (mm)		φ 65H7	
Spindle through hole diameter (mm)		φ 40	
Distance between axes (mm)		250	
Center height at right angle on table face (mm)		200	
Clamping method	Rotating axis	Pneumatic	
	Tilting axis	Air-Hydraulic	
Clamping torque (N·m) (In pneumatic 0.5MPa)	Rotating axis	400	
	Tilting axis	800	
Motor axis reduced inertia (kg·m ²)	Rotating axis	0.000383	
	Tilting axis	0.00035	
Servomotor (for FANUC specification)		α iF 2/5000	
Gear ratio	Rotating axis	1/90	
	Tilting axis	1/180	
Max. spindle speed	FANUC specification	Rotating axis (for min-1/motor 3000min-1)	33.3
		Tilting axis (for min-1/motor 3000min-1)	16.6
	M signal specification	Rotating axis (for min-1/motor 3000min-1)	33.3
		Tilting axis (for min-1/motor 3000min-1)	16.6
Allowable work inertia (kg·m ²)		0.12	
Indexing accuracy (sec)	Rotating axis	30	
	Tilting axis	60	
Repeatability (sec)		4	
Mass of product (kg)		247	
Built-in rotary joint (as an option)		RJ40TW2180 (Rotation per axis Hydraulic per axis/Pneumatic 2-port + Exclusive Pneumatic 3-port)	
Allowable Load	at horizontal (kg)	Rotation per axis	30
	at tilted (kg)	Rotation per axis	30
Allowable load	F (kN)	Rotation per axis	5
	F×L (N·m)	Rotation per axis	800
	F×L (N·m)	Rotation per axis	400
Allowable cutting torque	T (N·m)	Rotation per axis	250
Moment of tilting weight capacity	W×L (kgf·m)		6

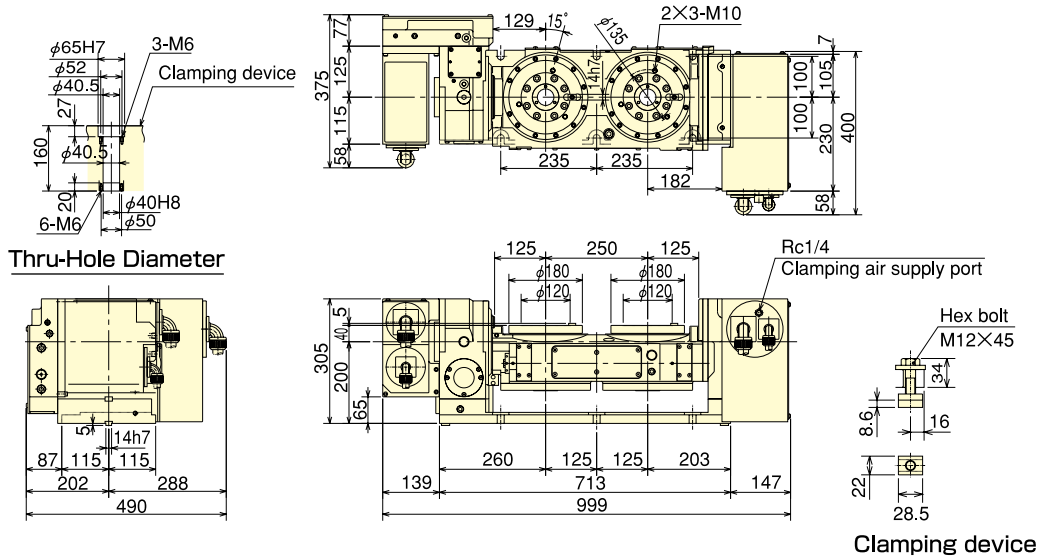
Note) 1. The switch for pressure checking is incorporated to all series except TC/DM of NC tables. 2. Solenoid valve(s) is (are) incorporated. 3. Neither cable nor hose is fitted between NC rotary table and machine tool... 4. Each product mass is determined by a Kitagawa M signal spec. 5. Simultaneous machining of 2-axis is impossible. 6. In case of additional axis spec., the position and type of supply port may be changed. Contact to Kitagawa on it separately.

TW 2 180 B R F *

Type	Table Size 180	Design No.
	Number of tables 2	Motor type (Double axes; same maker) Controller type (5: MAC mini iH2)
		Option spec. R: Rotary Joint -: Non- option
		Clamping method B: Rotating axis Air-Hydraulic Tilting axis Only Pneumatic

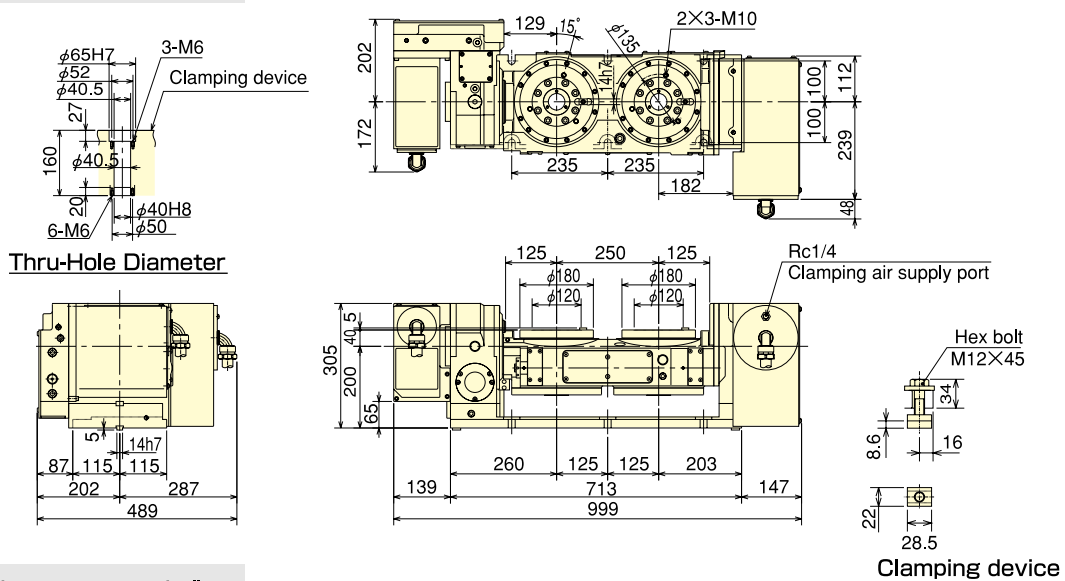
■ Dimensions

TW2180 [4th axis specifications]

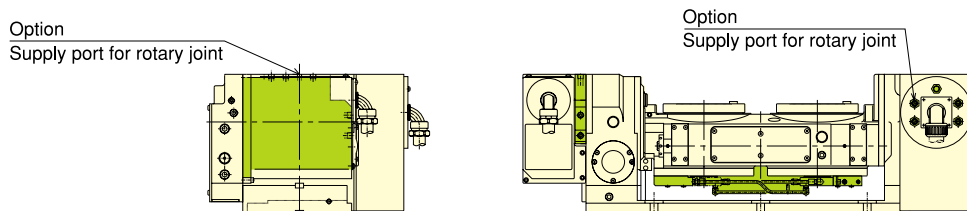


※The above dimensions are the same as FANUC dimensions. In case of motor specifications of other makers, dimensions may differ in length. Confer with Kitagawa about clamp devices.

With Kitagawa own controller



With Kitagawa own controller



TW