



**CHUCK**

# 3-Jaw Air-Operated Self Contained Chuck UB series

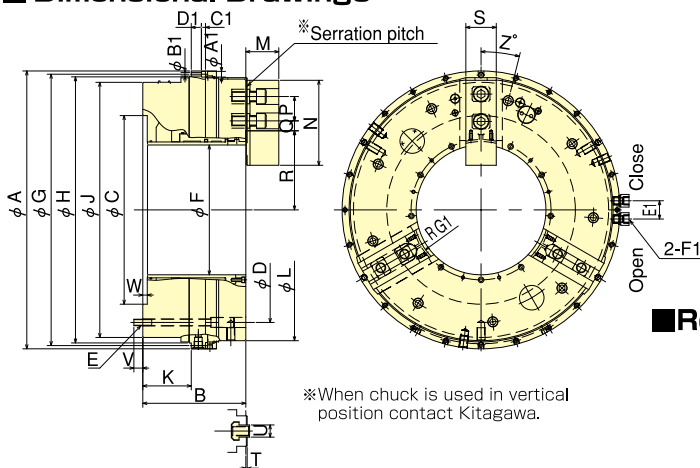
## Built-in Pneumatic Cylinder Large chuck best suited for pipe processing

- The jaw position can be detected
  - Internal pressure can be detected
- \* CE correspondence

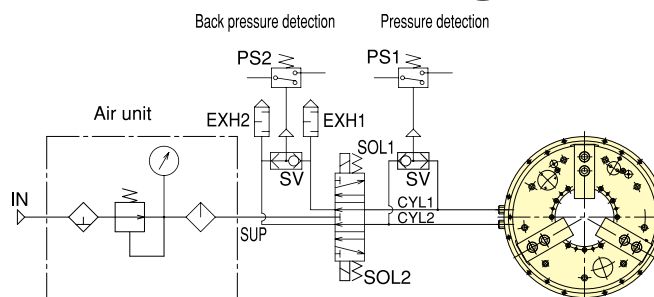


Standard Chuck

### Dimensional Drawings



### Recommended Air Circuit Diagram



※Serration pitch Model UBxxxK : mm, UBxxxP : inch

### Dimensions

Model	A1	B1	C1	D1	E1	F1	G1
UB450K/P	11	6.6	6.6	25	45	RC 3 / 8	87.5
UB560K/P	14	9	9	20	45	RC 1 / 2	134
UB630K/P	14	9	10	25	45	RC 1 / 2	160
UB710K/P	17	11	11	33	45	RC 1 / 2	185

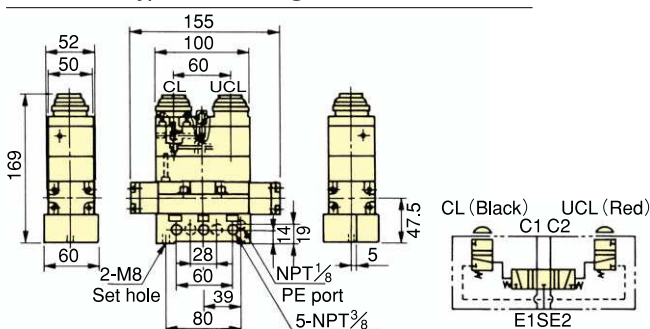
Model	A		B		C (H7)		D	E	F	G	H (H7)		J	K	L	M		N	P	Q max.	Q min.	R max.	R min.	S	T	U	V	W	Z
	mm	inch	mm	inch	mm	inch																							
UB450K/P	494	212	275	373	9-M12	181	481	470	431	98.5	441	67.3	68.7	165	43	41.5	17.5	121.4	114.4	62	3.3	25.5	17	6	20				
UB560K/P	626	230	375	485	6-M16	275	610	595	556	113.5	568	70.5	71.9	180	60	42	18	169	160.5	65	3.3	25.5	24	11	40				
UB630K/P	698	254	465	555	9-M16	320	682	669	629	119.5	645	81.3	82.7	209.5	60	50.5	23.5	195	186.5	75	3.3	30	22	11	14				
UB710K/P	790	252	520	620	9-M16	375	770	745	702	118.5	714	81.3	82.7	209.5	60	62.3	26.3	222.5	211.5	75	3.3	30	24	11	24				

### Specifications

Model	Centre hole dia mm	Gripping range mm		Jaw Stroke (diameter) mm	Plunger Stroke mm	Max. Gripping Force at air pressure kN (kgf)	Max. Speed min <sup>-1</sup>	Weight (with std. jaw) kg	Moment of inertia kg·m <sup>2</sup>	Max pressure MPa (kgf/cm <sup>2</sup> )	Air consumption per 10mm (at air pressure 0.6MPa (6.1kgf/cm <sup>2</sup> ))
		Max.	Min.								
UB450K/P	181	441	120	14	40	100.0 (10200)	1300	204.0	5.550	0.6 (6.1)	4.83
UB560K/P	275	568	220	17	37	120.0 (12230)	1100	320.0	15.800	0.6 (6.1)	7.17
UB630K/P	320	645	225	17	37	162.0 (16520)	1000	480.0	28.100	0.6 (6.1)	9.27
UB710K/P	375	714	275	22	36	144.0 (14680)	900	550.0	38.900	0.6 (6.1)	11.10

※Maximum speed is shown with each value under air pressure of 0.6MPa, using standard soft jaw and fixed air supply ring. If the supply ring is not fixed, each value in ( ) is applied.  
 ※Gripping force of a jaw is one third of max. gripping force.    ※Standard accessories : Soft jaw, air pressure gauge, tools of a set.  
 ※The work of diameter smaller than the above minimum gripping diameter can be gripped by using a collet pad (option).

### AVF-3-FL type manual change valve (Special accessories)



This valve is light-weight, compact and can be operated with the press of a button. The simple piping can be routed when the selector is mounted on the lathe. The valve is the exhaust centre type and designed for exclusive UB types.

Pressure	0~1MPa (10.1kgf/cm <sup>2</sup> )
Proof pressure	1.5MPa (15.3kgf/cm <sup>2</sup> )
Push button operation force	4kg
Connection bore	RC <sup>3</sup> / <sub>8</sub>