

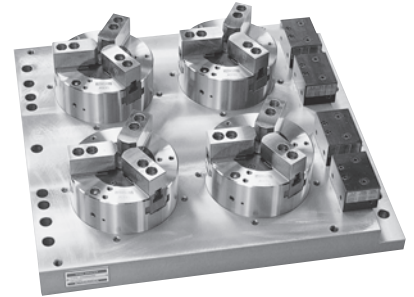


**WORK GRIPPER**

# Work Gripper (Multi-Plate)

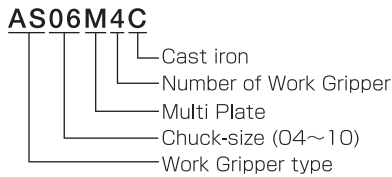
## ASM-C series

**Multi-plate allows simultaneous machining with up to six grippers on one plate**

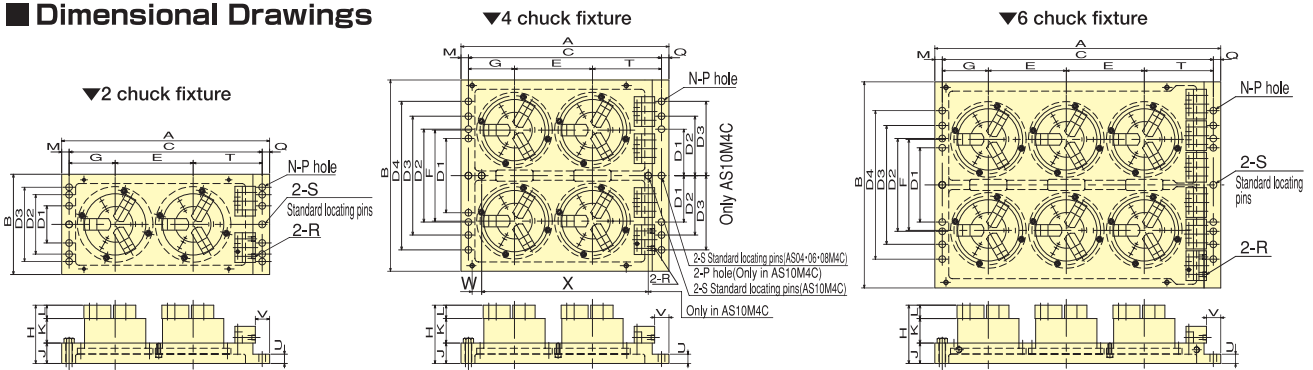


- Lock valve unit (option) can be mounted
- Three jaws (AS type) and two jaws (AT type) can be combined freely

### MODEL NUMBER EXPLANATION



### Dimensional Drawings



### Dimensions

Model	Dimensions spec	Matching Work Gripper	A	B	C	D1	D2	D3	D4	E	F	G	H	J
AS04M2C	2 chuck fixture	AS04	450	205	410	100	160	-	-	155	-	100	143	55
AS06M2C	2 chuck fixture	AS06	560	270	520	100	160	200	-	210	-	124	157	55
AS08M2C	2 chuck fixture	AS08	655	315	615	160	200	250	-	255	-	150	174	55
AS10M2C	2 chuck fixture	AS10	765	375	725	160	200	250	-	310	-	175	182	60
AS04M4C	4 chuck fixture	AS04	450	380	410	160	200	250	320	155	180	100	143	55
AS06M4C	4 chuck fixture	AS06	560	515	520	200	250	320	400	210	245	124	157	55
AS08M4C	4 chuck fixture	AS08	655	600	615	200	250	400	500	255	285	150	174	55
AS10M4C	4 chuck fixture	AS10	765	705	725	160	200	250	-	310	335	175	182	60
AS04M6C	6 chuck fixture	AS04	660	380	620	160	200	250	320	155	180	155	143	55
AS06M6C	6 chuck fixture	AS06	770	555	730	200	250	320	400	210	245	124	157	55

Model	Dimensions	K	L	M	N	φP	Q	R	φS	T	U	V	W	X	Net Weight (kg)
AS04M2C		61	27	20	8	18	20	Rc1/4	18	155	25	38.5	-	-	17.0
AS06M2C		66	36	20	12	18	20	Rc1/4	18	186	25	38.5	-	-	26.0
AS08M2C		77	42	20	12	18	20	Rc1/4	18	210	25	38.5	-	-	32.0
AS10M2C		76	46	20	12	18	20	Rc1/4	18	240	25	43.5	-	-	50.0
AS04M4C		61	27	20	16	18	20	Rc1/4	18	155	25	38.5	-	-	31.0
AS06M4C		66	36	20	16	18	20	Rc1/4	18	186	25	38.5	-	-	47.0
AS08M4C		77	42	20	16	18	20	Rc1/4	18	210	25	38.5	-	-	58.0
AS10M4C		76	46	20	14	18	20	Rc1/4	18	240	25	43.5	40	645	90.0
AS04M6C		61	27	20	16	18	20	Rc1/4	18	155	25	38.5	-	-	40.0
AS06M6C		66	36	20	16	18	20	Rc1/4	18	186	25	38.5	-	-	67.0