



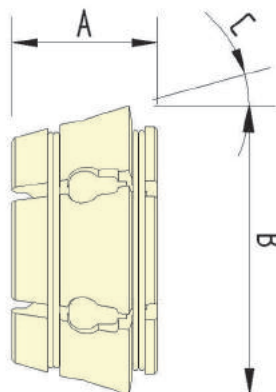
**COLLET
CHUCK**

Collet Chuck Series

COLLETS



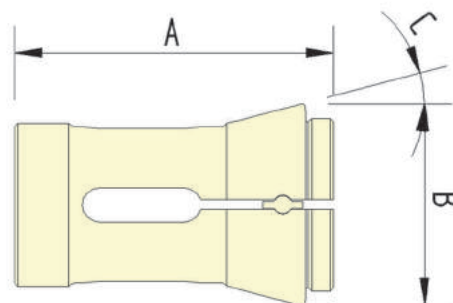
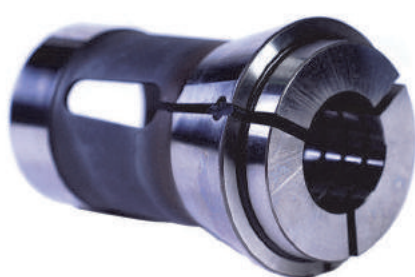
Varibore Collets



- Inch varibore collets have a gripping range of 1/8" on diameter and feature a plain bore.
- Metric round DIN varibore collets have a gripping range of 2mm on diameter and have a spiral gripping surface (above 8mm).
- Metric hex and square DIN varibore collets use a gripping range of 2mm and feature annular gripping surface (above 8mm).
- Optional heavy duty collets are available for black bar (may cause marking).

Chuck	Type	Capacity mm			Dimensions mm		
		Round	Hex	Square	Length (A)	Diameter (B)	Taper (C)
CRS36	D-671 DIN	4-34	4-28	4-24	38	56.5	14.75°
QCRL42I	D-850	1.6-44.5	1.6-38.1	1.6-31.8	51.8	70.1	15°
QCRL42	D-673 DIN	4-42	4-36	4-30	39	61.5	14.75°
CRS54, QCRL54	D-120	1.6-53.9	3.2-50.8	3.2-41.3	62.7	88	15°
QCRL60	D-677 DIN	4-60	4-52	4-42	45	85.5	14.75°
CRS66, QCRL66	D-285	3.2-66.6	3.2-57.1	3.2-44.4	73.2	99.3	15°
QCRS80	D-175	12.7-80	12.7-66.7	12.7-54	80	120	15°
QCRL80	D-660	12-80	12-68	12-56	48	108.5	14.75°

Spring Collets



- Spring collets used primarily for second operation work, where marking of the component is to be avoided, or where necessary to grip a short portion of the component.
- Collet bore diameters are dedicated.
- Emergency collets are supplied where fast turn around, small batch quantities are machined.

Chuck	Type	Max. Capacity mm			Dimensions		
		Round	Hex	Square	Length (A)	Diameter (B)	Taper (C)
CRS36	D171E	36	30	26	94	55.3	14.75°
QCRL42I	D-286	38.5	33	29	95.25	68.25	15°
QCRL42	D173E	42	38	30	94	60	14.75°
QCRL54	D-853	51	44	36	125.4	88.1	15°
QCRL60	D185E	60	52	42	110	84	14.75°
QCRL80	D-193E	80	69	56	130	170	15°