



**COLLET
CHUCK**

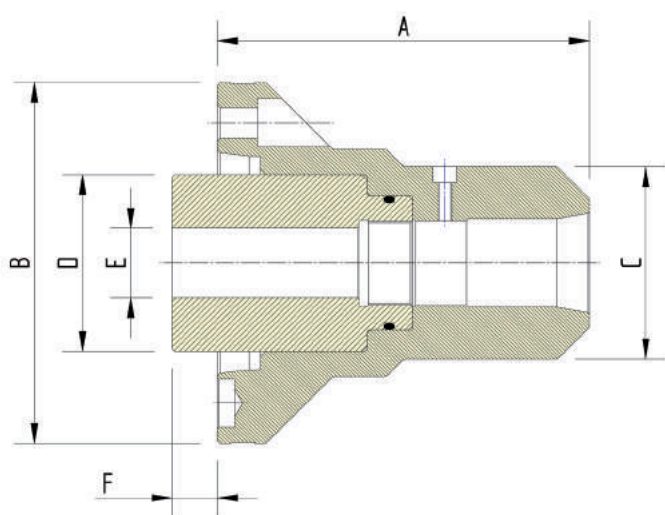
Pull Back Series Power Collet Chucks

PULL BACK series



Standard Features

- Pull back design for first operation.
- Suitable for 5C & 16C collets.
- Ejectors available.
- Compact design for improved tool access.



Collet Chuck

Specifications		DEL 5C	DEL 16C
Capacity	mm	0.5 - 27	0.5 - 42
Pull Back Ratio		1:3	1:3
Max Drawbar Pull	kN	20	24
Max Speed (r.p.m)	min ⁻¹	6000	6000
Net Weight	kg	7, 11	6, 8
Collet Ref	Pull Back	5C	16C

Dimensions	DEL 5C			DEL 16C		
Mount	140 x 6	A5	A6	170 x 6	A5	A6
A	144	139	147	157	152	160
B	160	135	170	190	135	170
C	72	72	85	72	85	85
D	65	83	65	83	65	83
E Max	M58 x 2.0	M75 x 2.0	M58 x 2.0	M75 x 2.0	M58 x 2.0	M75 x 2.0
F Min	12	17	17	12	17	9