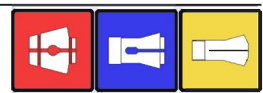




**COLLET
CHUCK**

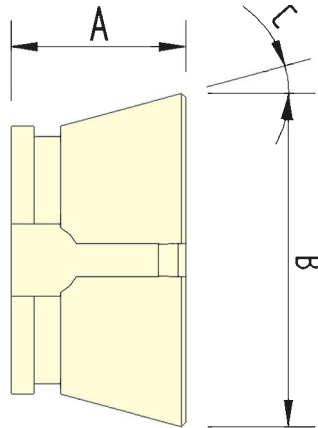
Collet Chuck Series

COLLETS



Collet Chuck

DC Collets

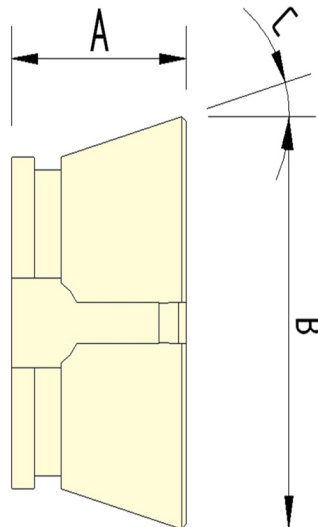


- Collet bore diameters are dedicated.
- Short changeover time by use of manual or pneumatic changing devices.



Chuck	Type	Capacity mm			Dimensions mm		
		Round	Hex	Square	Length (A)	Diameter (B)	Taper (C)
DHP/F 52	DC-52 (smooth)	6 - 52	7	-	46	79.2	15°
DHP/F 52	DC-52 (radial groove)	8 - 11	8 - 45	8 - 36	46	79.2	15°
DHP/F 52	DC-52 (serrated)	12 - 52	-	-	46	79.2	15°
DHP/F 65	DC-65 (smooth)	4.0 - 65	7	-	53	99.5	15°
DHP/F 65	DC-65 (radial groove)	8 - 10.5	8 - 56	8 - 46	53	99.5	15°
DHP/F 65	DC-65 (serrated)	11 - 65	-	-	53	99.5	15°

DC Collets



- Collet bore diameters are dedicated.
- Short changeover time by use of manual or pneumatic changing devices.



Chuck	Type	Capacity mm			Dimensions mm		
		Round	Hex	Square	Length (A)	Diameter (B)	Taper (C)
DHF42	DC-42 (Smooth)	4-42	7	7	47	79.3	15°
DHF42	DC-42 (Radial)	8-10	8-36	8-30	47	79.3	15°
DHF42	DC-42 (Serrated)	11-24	-	-	47	79.3	15°