



NC ROTARY TABLE

# Tilting NC Rotary Table TT150

**High stiffness and clamp torque of main spindle!  
Compact designed body with minimized total height  
keeps less high-column of machine.**

- Suitable for No.30 machining centers (\*High-column specification may be required to suit a variety of machine models.)
- High clamp torque
- Built-in Rotary Joint as option\*

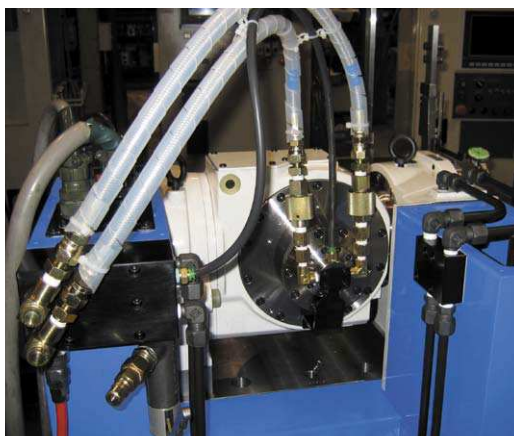


TT150

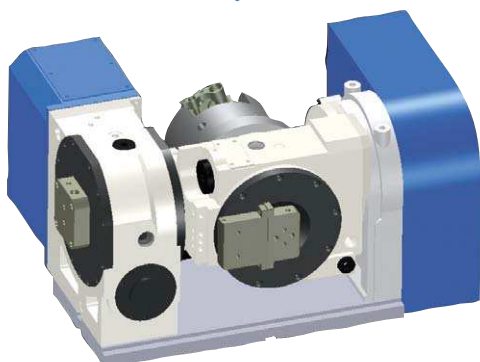
\*CE correspondence

※In specification with the foreign trade control ordinance, permission of the ministry of economy, trade and industry is required when exporting twin axis products overseas.

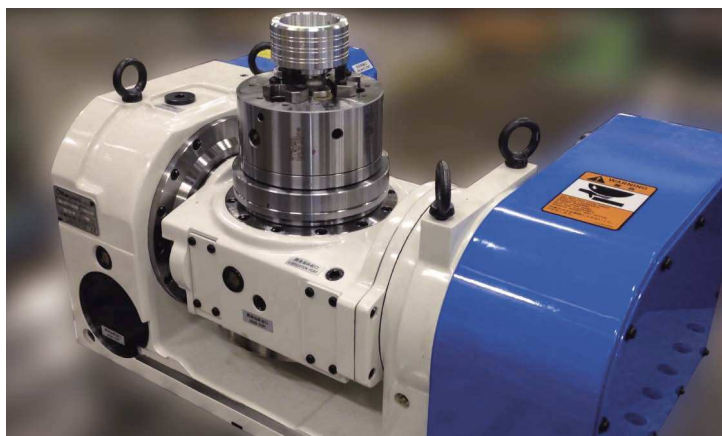
## Complete built-in rotary joint (option)



Simplified Pipework



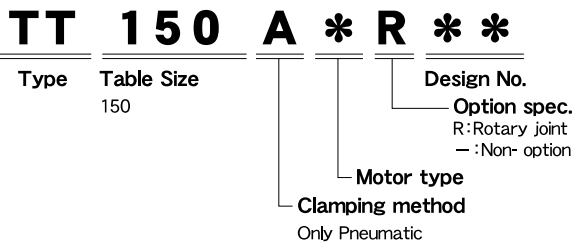
## Sample Application



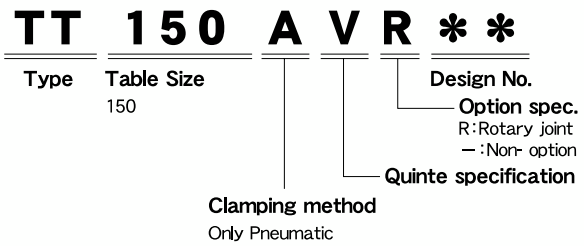
▲Only Kitagawa can offer this combination of NC Rotary Table and chuck

- Installation of optional rotary joint

### 4th axis specifications



### M signal specification



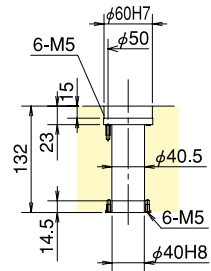
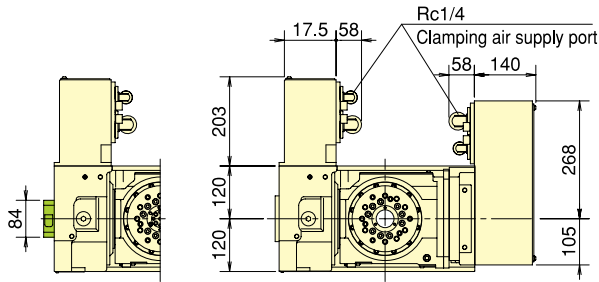
## Specifications

Model		TT150	
Tilting angle		-20° ~ +110°	
Table dia (mm)		φ 150	
Register diameter on Face Plate (mm)		φ 60H7	
Spindle through hole diameter (mm)		φ 40	
Centre Height (mm)		150	
Clamping method		Pneumatic	
Clamping torque (N·m) (In pneumatic 0.5MPa)	Rotating axis	350	
	Tilting axis	550	
Motor axis reduced inertia (kg·m <sup>2</sup> )	Rotating axis	0.000242	
	Tilting axis	0.000132	
Servomotor (for FANUC specification)		α iF 2/5000	
Gear ratio	Rotating axis	1/72	
	Tilting axis	1/180	
Max. spindle speed	for FANUC specification	Rotating axis (for min <sup>1</sup> /Motor3000min <sup>-1</sup> )	41.6
		Tilting axis (for min <sup>1</sup> /Motor3000min <sup>-1</sup> )	16.6
	M signal specification	Rotating axis (for min <sup>1</sup> /Motor3000min <sup>-1</sup> )	41.6
		Tilting axis (for min <sup>1</sup> /Motor3000min <sup>-1</sup> )	16.6
Allowable work inertia (kg·m <sup>2</sup> )		0.14	
Indexing accuracy (sec)	Rotating axis	30	
	Tilting axis	60	
Repeatability (sec)		4	
Mass of product (kg)		141	
Built-in rotary joint (as an option · P97reference)		RJ40FTT150 Hyd./pneumatic 4-port + Exclusive pneumatic 1 port of air	
Allowable Load	at horizontal (kg)	50	
	at tilted (kg)	30	
Allowable load (When clamped to table)	F (kN)	4	
	F×L (N·m)	550	
	F×L (N·m)	350	
Allowable cutting torque	T (N·m)	190	
Moment of tilting weight capacity	W×L (kgf·m)	11	

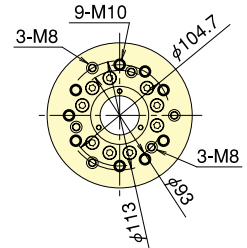
Note) 1. The switch for pressure checking is incorporated to all series except TC/DM of NC tables. 2. The solenoid valve for the table clamp is incorporated. 3. Neither cable nor hose is fitted between NC rotary table and machine tool... 4. Each product mass is determined by a Kitagawa M signal spec.

## ■Dimensions [4th axis specifications]

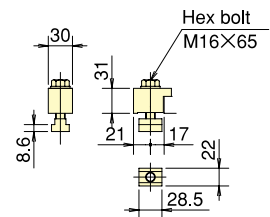
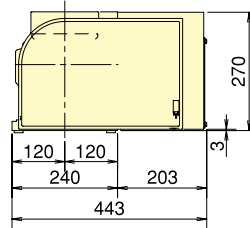
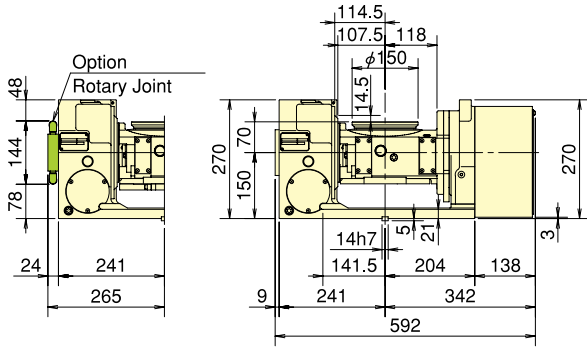
### TT150



Thru-Hole Diameter



Detailed table hole

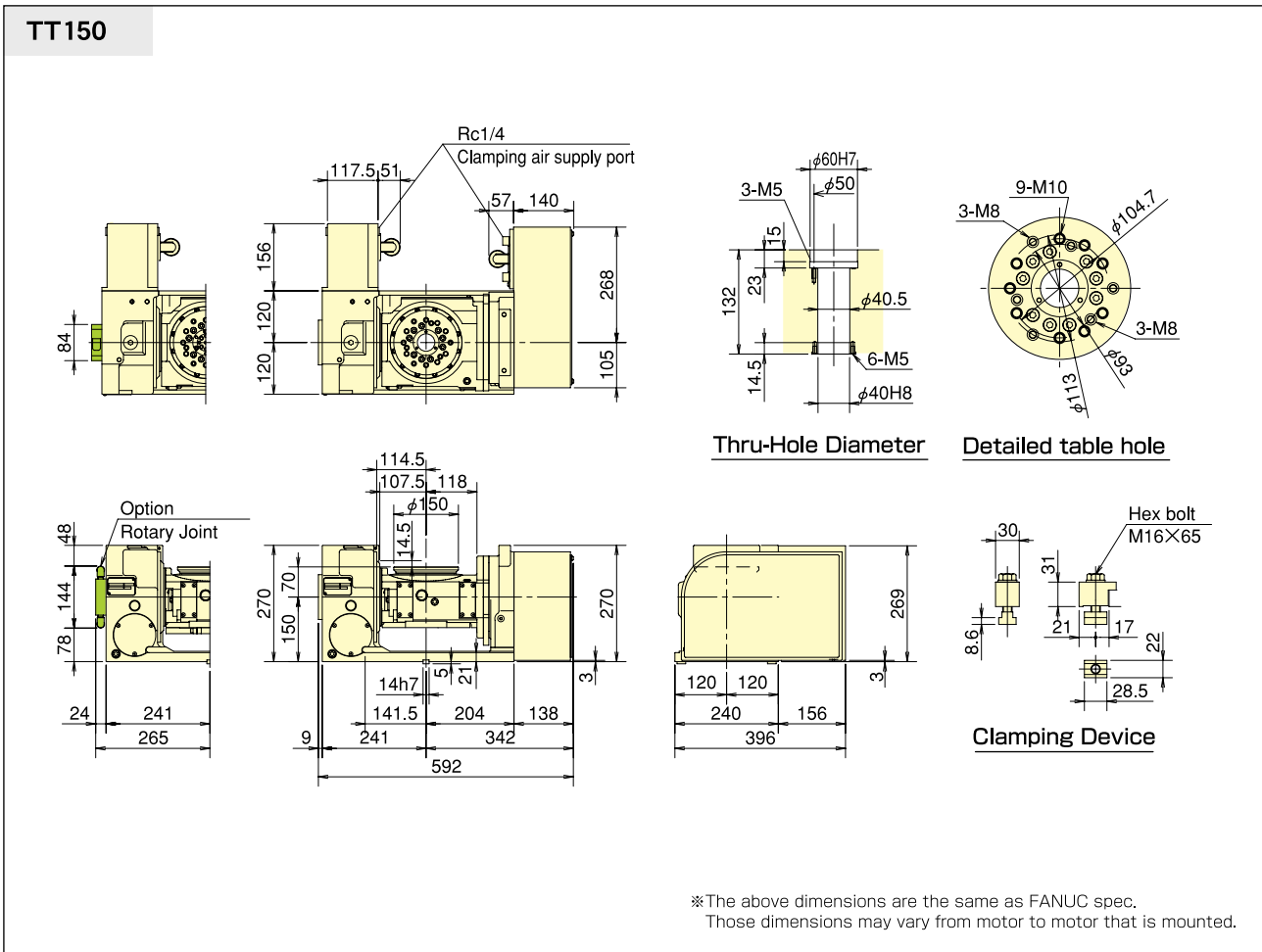


Clamping Device

※The above dimensions are the same as FANUC spec.  
Those dimensions may vary from motor to motor that is mounted.

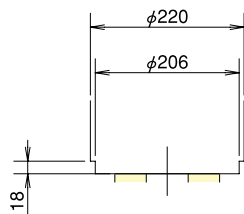
**■Dimensions [Kitagawa own controller]**

\*The dimensions may vary from motor to motor that is mounted.

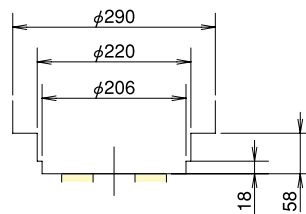


# DATA Tilting NC table • Work loadable area

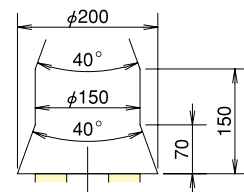
**TT150**



-20°~0°



0° (horizontal) ~90° (Vertical)



90°~110°