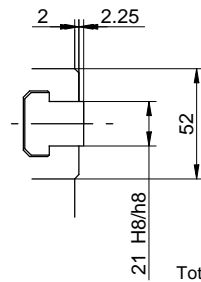


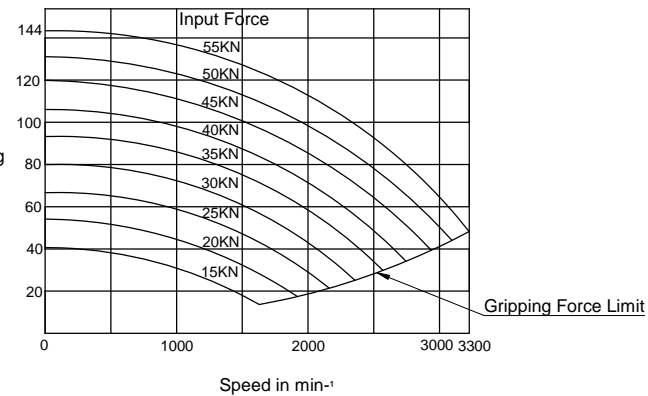
Specifications

SPINDLE NOSE SIZE	A2-6
THROUGH HOLE	91mm
MAX. GRIPPING RANGE	304mm
MIN. GRIPPING RANGE	34mm
JAW STROKE	10.6mm
PLUNGER STROKE	23mm
MAX. DRAW BAR PULL FORCE	55kN
MAX. GRIPPING FORCE	144kN
MAX. SPEED	3300min ⁻¹
TOTAL GRIPPING FORCE AT MAX. SPEED	48kN
NET WEIGHT WITH SOFT TOP JAWS	67.0kg
MOMENT OF INERTIA	0.780kg.m ²
MATCHING CYLINDER	S2091
MAX. PRESSURE	2.70MPa
MATCHING HARD TOP JAW	HB12N1
MATCHING SOFT TOP JAW	SB12N1/KSJ-212



Total Gripping Force in kN

Gripping Characteristic Graph For B-212A6



KITAGAWA EUROPE LIMITED
 TITLE : B212A6 POWER CHUCK
 www.kitagawaeurope.com