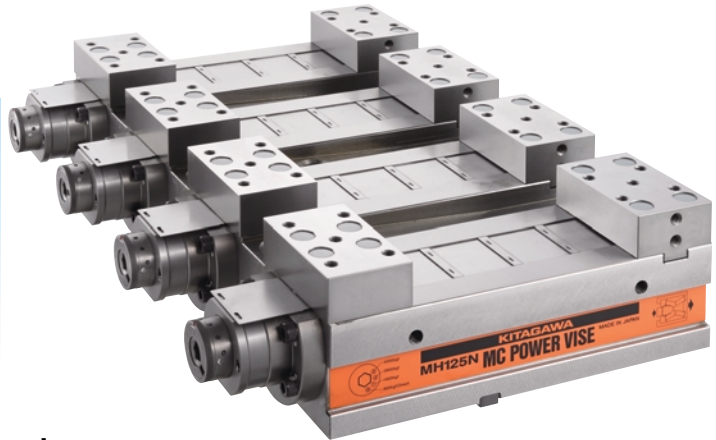


WISE

Multi-Power Vise Horizontal 4-Piece Integrated Type MH125N-4

**Most suitable for high-volume production machining!
Parallel integrated-type vise**

- Most suitable for long-size work and simultaneous machining of multiple workpieces
- Cast iron body with a high vibration damping property
- High rigidity ensured by the integrated body
- Firm clamping of work ensured by a high clamping force
- Stable clamping force ensured by the mechanical-type enhancement toggle mechanism
- Lift-up reduced to the minimum, offering stable machining accuracy
- The VQX-N type jaws can be used.



Clamping Force Table (Unit : kN)

Range	3	2	1	0
MH125N-4	40	28	16	8

※ Zero range means clamp without a step-up mechanism.
Clamp force shows an allowable amount.

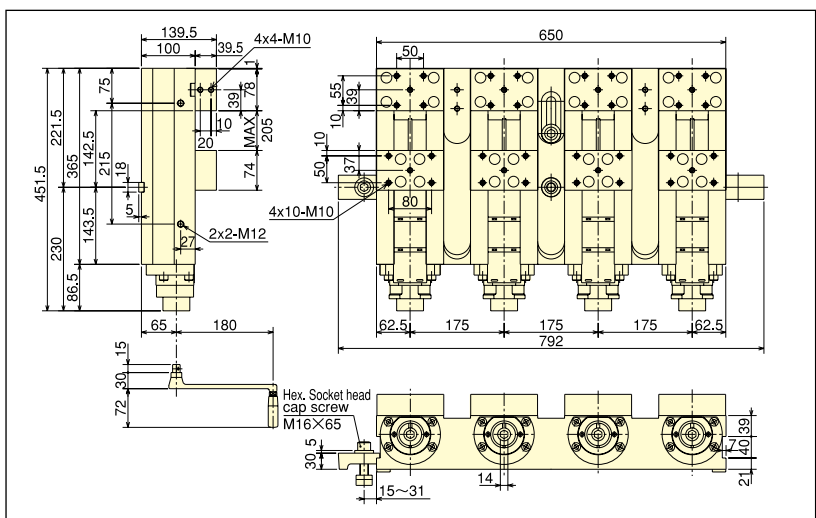
Specifications (Unit : mm)

Jaw width	Jaw stroke	Total height	Full width	Max. clamping force(kN)	Mass (kg)
124.5	205	140	650	40	170

Jaw allowable sizes for clamping force (Unit : mm)

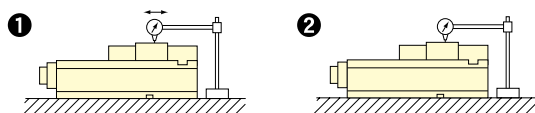
MH125N-4	Range	3	2	1
	Jaw height	40 (standard)	60	100

Dimensions



(Unit : mm)

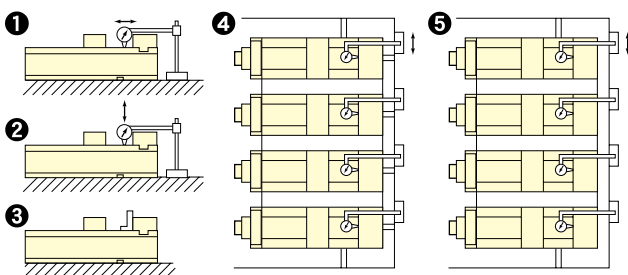
Dynamic accuracy



No.	Inspection item	Tolerance
1	Parallelism of upper face of clamped test block and body bottom face	0.015 per 100
2	Lift on upper face of test block when clamped.	0.015

(Unit : mm)

Static accuracy



No.	Inspection item	Tolerance
1	Parallelism of body bottom face and jaw slideway	0.010 for max. jaw opening width
2	Height difference for each jaw slideway	Measured at jaw opening width center
3	Squareness of fixed jaw clamping face and jaw slideway	0.010 for total jaw height Not to be outside opening.
4	Difference of come-in/out of fixed jaw clamping face for guide block side face of body bottom face	Measured at jaw width center to 0.010.
5	Parallelism of guide block side face of body bottom face and fixed jaw clamping face	0.010 for overall jaw width

■ **Body Material** : Cast iron ■ **Jaw Material** : Hardened steel

■ **Standard Accessories** : Clamp device assembly (clamp device, T-nut(s), bolt(s), washer(s)), handle, L-shaped hexagonal wrench, C-caps, slide cover

■ **Options** : Stepped guide block, ratchet handle, extension bar, soft jaws (a set of a moving-side and a fixed-side jaws)

※ The guide block can be changed to suit the machine where the vise is mounted. In this case, please contact us.

MH125N-4