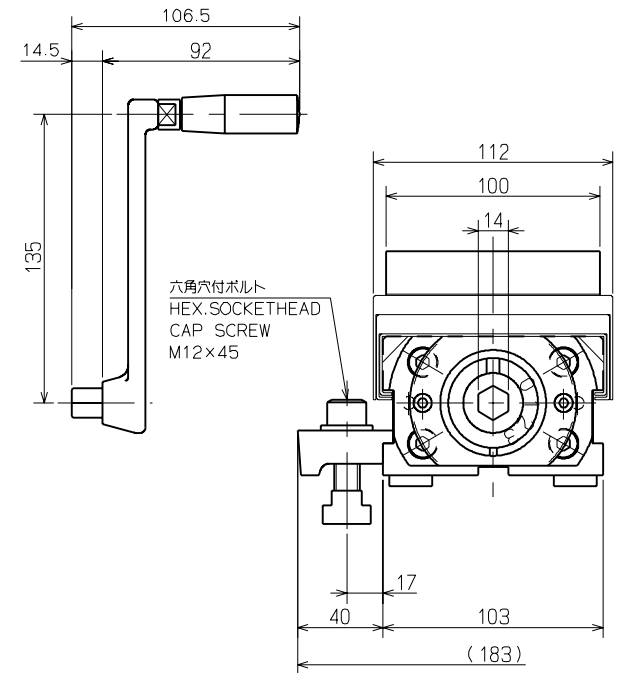
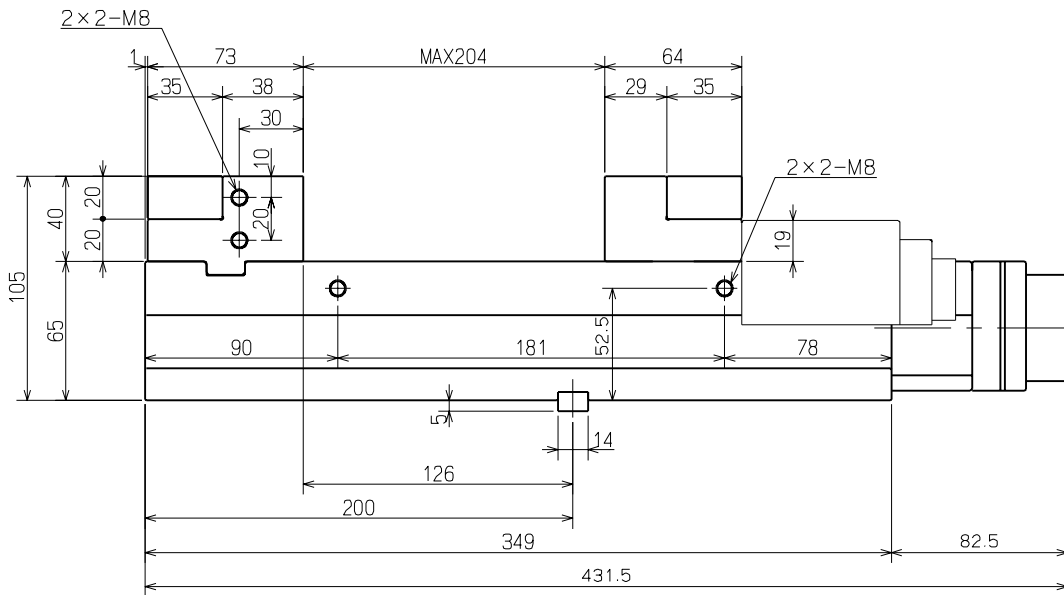
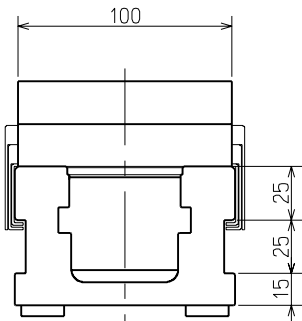
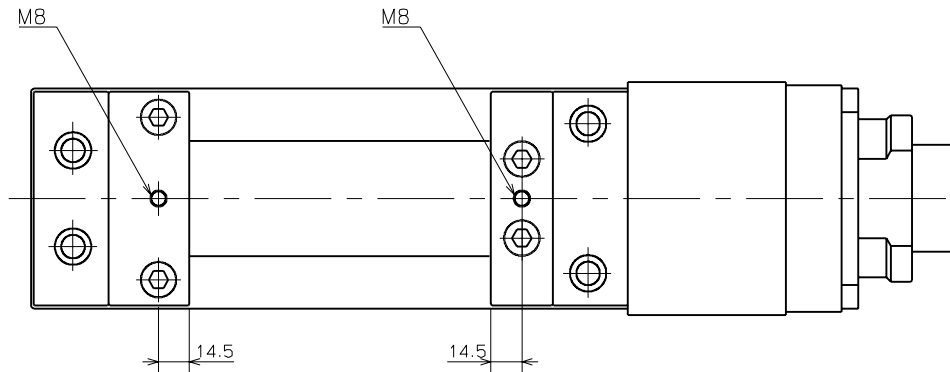


仕様 SPECIFICATIONS	
口金の開き CLAMPING RANGE	0~204mm
締付トルク TIGHTENING TORQUE	
締付けレンジ CLAMP RANGE	1 10KN
	2 15KN
	3 20KN
製品質量 MASS OF POWER VICE	19kg



(クランプ器具4セット付属)  
(CLAMPING PARTS ACCESSARY 4 PAIR)  
(クランプ器具幅寸法は35mmです。)  
(A CLAMPING PART IS THE WIDTH OF 35mm.)

CAREER		SCALE	TYPE	VC104	WEIGHT	kg
MANAGER	CHIEF	2:5	NAME	パワーバイス	POWER VICE	
		3RD ANGLE		VC104	ガイケイ	
					OUTSIDE VIEW	
KITAGAWA IRON WORKS CO., LTD.	DATE	DRW NO.	61M	36	2740	3