

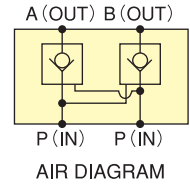
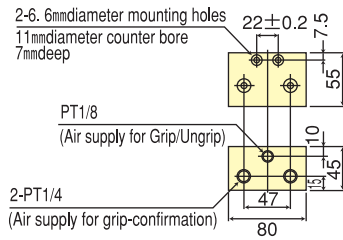
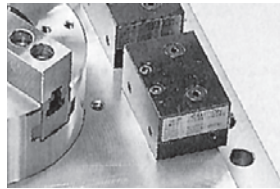


**WORK GRIPPER**

# Option

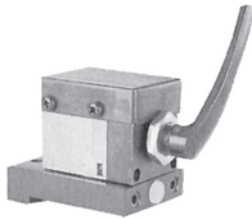
## LV-3

■ Air Lock Valve Unit



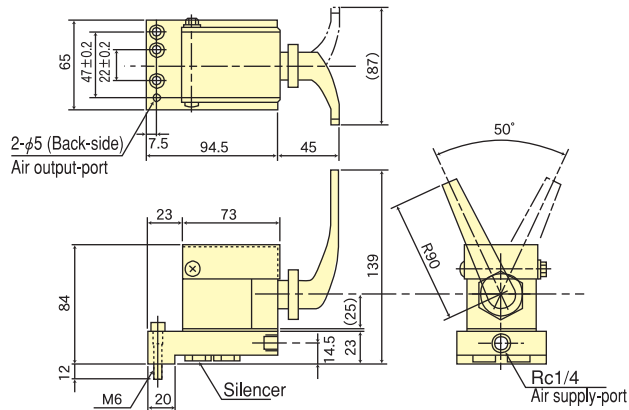
## AV-02F

■ Original manual air valve by **KITAGAWA**

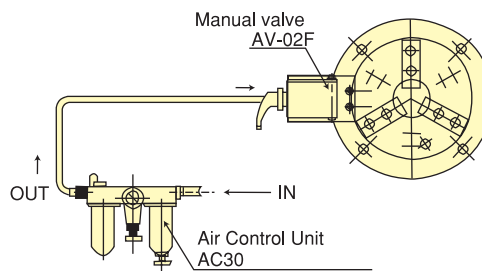


AV-02F allows air system to be simplified

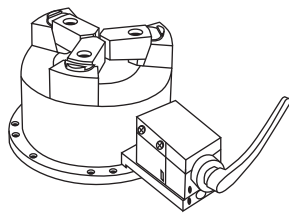
※ Valves can be easily mounted onto work gripper and multiplate.



■ Mounting Drawing (by AV-02F)

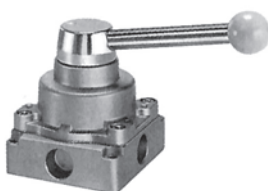


Max. pressure	1MPa (10kgf/cm <sup>2</sup> )
Lever movement	50°
Connection port	Rc1/4



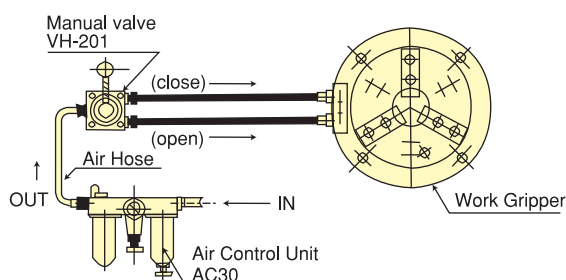
## VH-201

■ Manual Air Valve



Max. pressure	1MPa (10kgf/cm <sup>2</sup> )
Lever movement	90°
Connection port	Rc1/4

■ Mounting Drawing (by VH-201)



## AC30

■ Air Control Unit (With Lubrication)

Max. pressure	1MPa (10kgf/cm <sup>2</sup> )
Pressure setting range	0.05~0.85MPa (0.5~8.6kgf/cm <sup>2</sup> )
Filter mesh	5μm
Max. temperature	60°C
Connection port	Rc1/4